




RANDABSCHLUSSBEWEHRUNG
ARMATURA DI BORDO SOLAIO

- 1** **8/2. 2000h.**
2000h/2000h
- 2** 303910/ 20 174h
- 3**  **303910/ 20 174h**
- 4** **8/2. 2000h.**
2000h/2000h
- 5** 886/5 188h
- 6**  **886/5 188h**
- 7** 9946/ 5 168h
- 8**  **9946/ 5 168h**
- 9** **8/2. 2000h.**
2000h/2000h
- 10** **8/2. 2000h.**
2000h/2000h
- 11** 3394/ 20 178h
- 12** 4784/ 20 160h
- 13** 3465/ 20 120h
- 14** 1188/ 20 160h
- 15** 303910/ 20 174h
- 16** 303910/ 20 174h
- 17** 303910/ 20 174h
- 18** 303910/ 20 174h
- 19** 303910/ 20 174h
- 20** 303910/ 20 174h
- 21** 303910/ 20 174h
- 22** 303910/ 20 174h
- 23** 303910/ 20 174h
- 24** 303910/ 20 174h
- 25** 303910/ 20 174h
- 26** 303910/ 20 174h
- 27** 303910/ 20 174h
- 28** 303910/ 20 174h
- 29** 303910/ 20 174h
- 30** 303910/ 20 174h
- 31** 303910/ 20 174h
- 32** 303910/ 20 174h
- 33** 303910/ 20 174h
- 34** 303910/ 20 174h
- 35** 303910/ 20 174h
- 36** 303910/ 20 174h
- 37** 303910/ 20 174h
- 38** 303910/ 20 174h
- 39** 303910/ 20 174h
- 40** 303910/ 20 174h
- 41** 303910/ 20 174h
- 42** 303910/ 20 174h
- 43** 303910/ 20 174h
- 44** 303910/ 20 174h
- 45** 303910/ 20 174h
- 46** 303910/ 20 174h
- 47** 303910/ 20 174h
- 48** 303910/ 20 174h
- 49** 303910/ 20 174h
- 50** 303910/ 20 174h
- 51** 303910/ 20 174h
- 52** 303910/ 20 174h
- 53** 303910/ 20 174h
- 54** 303910/ 20 174h
- 55** 303910/ 20 174h
- 56** 303910/ 20 174h
- 57** 303910/ 20 174h
- 58** 303910/ 20 174h
- 59** 303910/ 20 174h
- 60** 303910/ 20 174h
- 61** 303910/ 20 174h
- 62** 303910/ 20 174h
- 63** 303910/ 20 174h
- 64** 303910/ 20 174h
- 65** 303910/ 20 174h
- 66** 303910/ 20 174h
- 67** 303910/ 20 174h
- 68** 303910/ 20 174h
- 69** 303910/ 20 174h
- 70** 303910/ 20 174h
- 71** 303910/ 20 174h
- 72** 303910/ 20 174h
- 73** 303910/ 20 174h
- 74** 303910/ 20 174h
- 75** 303910/ 20 174h
- 76** 303910/ 20 174h
- 77** 303910/ 20 174h
- 78** 303910/ 20 174h
- 79** 303910/ 20 174h
- 80** 303910/ 20 174h
- 81** 303910/ 20 174h
- 82** 303910/ 20 174h
- 83** 303910/ 20 174h
- 84** 303910/ 20 174h
- 85** 303910/ 20 174h
- 86** 303910/ 20 174h
- 87** 303910/ 20 174h
- 88** 303910/ 20 174h
- 89** 303910/ 20 174h
- 90** 303910/ 20 174h
- 91** 303910/ 20 174h
- 92** 303910/ 20 174h
- 93** 303910/ 20 174h
- 94** 303910/ 20 174h
- 95** 303910/ 20 174h
- 96** 303910/ 20 174h
- 97** 303910/ 20 174h
- 98** 303910/ 20 174h
- 99** 303910/ 20 174h
- 100** 303910/ 20 174h
- 101** 303910/ 20 174h
- 102** 303910/ 20 174h
- 103** 303910/ 20 174h
- 104** 303910/ 20 174h
- 105** 303910/ 20 174h
- 106** 303910/ 20 174h
- 107** 303910/ 20 174h
- 108** 303910/ 20 174h
- 109** 303910/ 20 174h
- 110** 303910/ 20 174h
- 111** 303910/ 20 174h
- 112** 303910/ 20 174h
- 113** 303910/ 20 174h
- 114** 303910/ 20 174h
- 115** 303910/ 20 174h
- 116** 303910/ 20 174h
- 117** 303910/ 20 174h
- 118** 303910/ 20 174h
- 119** 303910/ 20 174h
- 120** 303910/ 20 174h
- 121** 303910/ 20 174h
- 122** 303910/ 20 174h
- 123** 303910/ 20 174h
- 124** 303910/ 20 174h
- 125** 303910/ 20 174h
- 126** 303910/ 20 174h
- 127** 303910/ 20 174h
- 128** 303910/ 20 174h
- 129** 303910/ 20 174h
- 130** 303910/ 20 174h
- 131** 303910/ 20 174h
- 132** 303910/ 20 174h
- 133** 303910/ 20 174h
- 134** 303910/ 20 174h
- 135** 303910/ 20 174h
- 136** 303910/ 20 174h
- 137** 303910/ 20 174h
- 138** 303910/ 20 174h
- 139** 303910/ 20 174h
- 140** 303910/ 20 174h
- 141** 303910

- [illegible]

- ②1 71612/15 1.59m

 DURCHSTANDBEWEHUNG / ARMATURA DI PUNZONAMENTO

JNZONAMENTO

- | ÜBERE BEWERTUNG / ANMUTURA SUPERIORE | |
|--------------------------------------|--------------|
| 81 | 5902/15 1400 |
| 82 | 1102/15 1400 |
| 83 | 1102/15 1400 |
| 84 | 1102/15 1400 |
| 85 | 1102/15 1400 |
| 86 | 1102/15 1400 |
| 87 | 1102/15 1400 |
| 88 | 1102/15 1400 |
| 89 | 1102/15 1400 |
| 90 | 1102/15 1400 |
| 91 | 1102/15 1400 |
| 92 | 1102/15 1400 |
| 93 | 1102/15 1400 |
| 94 | 1102/15 1400 |
| 95 | 1102/15 1400 |
| 96 | 1102/15 1400 |
| 97 | 1102/15 1400 |
| 98 | 1102/15 1400 |
| 99 | 1102/15 1400 |
| 100 | 1102/15 1400 |

- (42) 10e2/5 4.5h
 4.5h

 10h
- (43) 55e2/2 4.5h
 4.5h

 10h
- (44) 55e2/3 2h
 2h

 10h
- (45) 42e5/3 10h
 10h

 30h
- (46) 25e2/5 50h
 50h

 10h
- (47) 10e4/5 55h
 55h

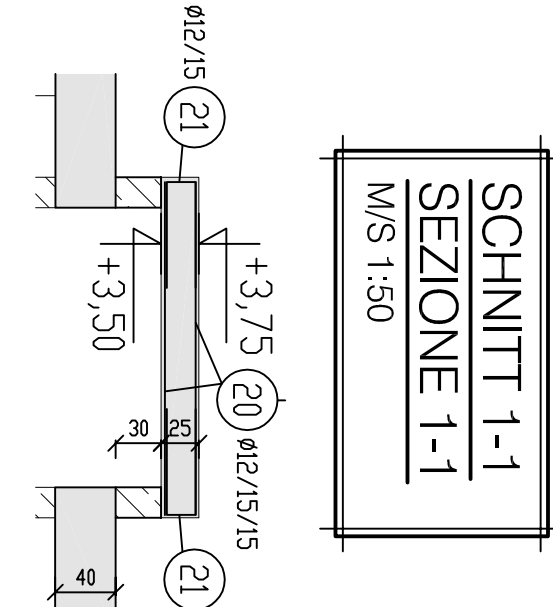
 10h
- (48) 15e2/5 4.5h
 4.5h

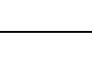








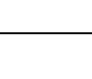
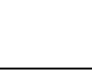

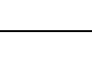
 10h
- (49) 55e1/5 55h
 55h

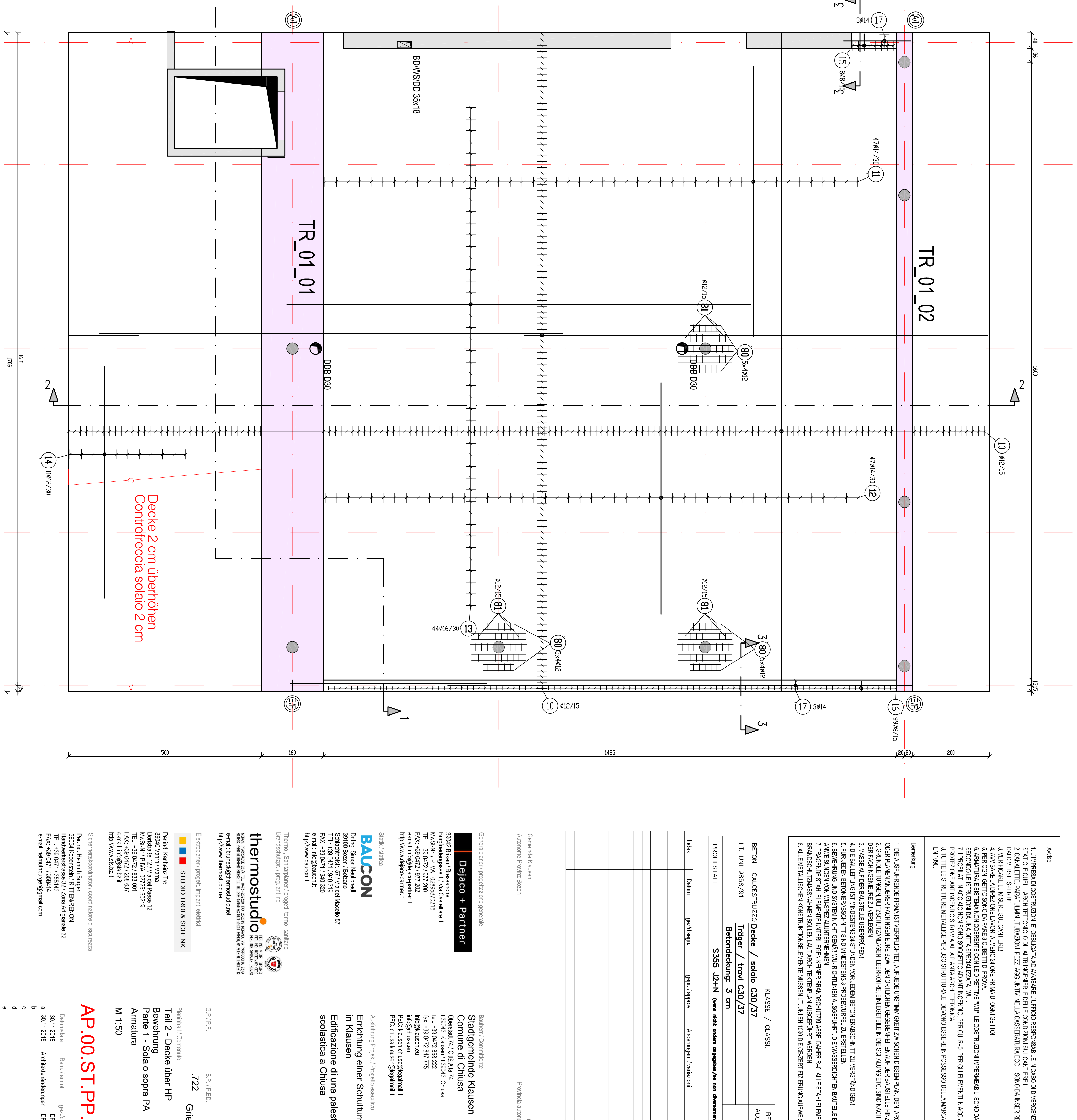
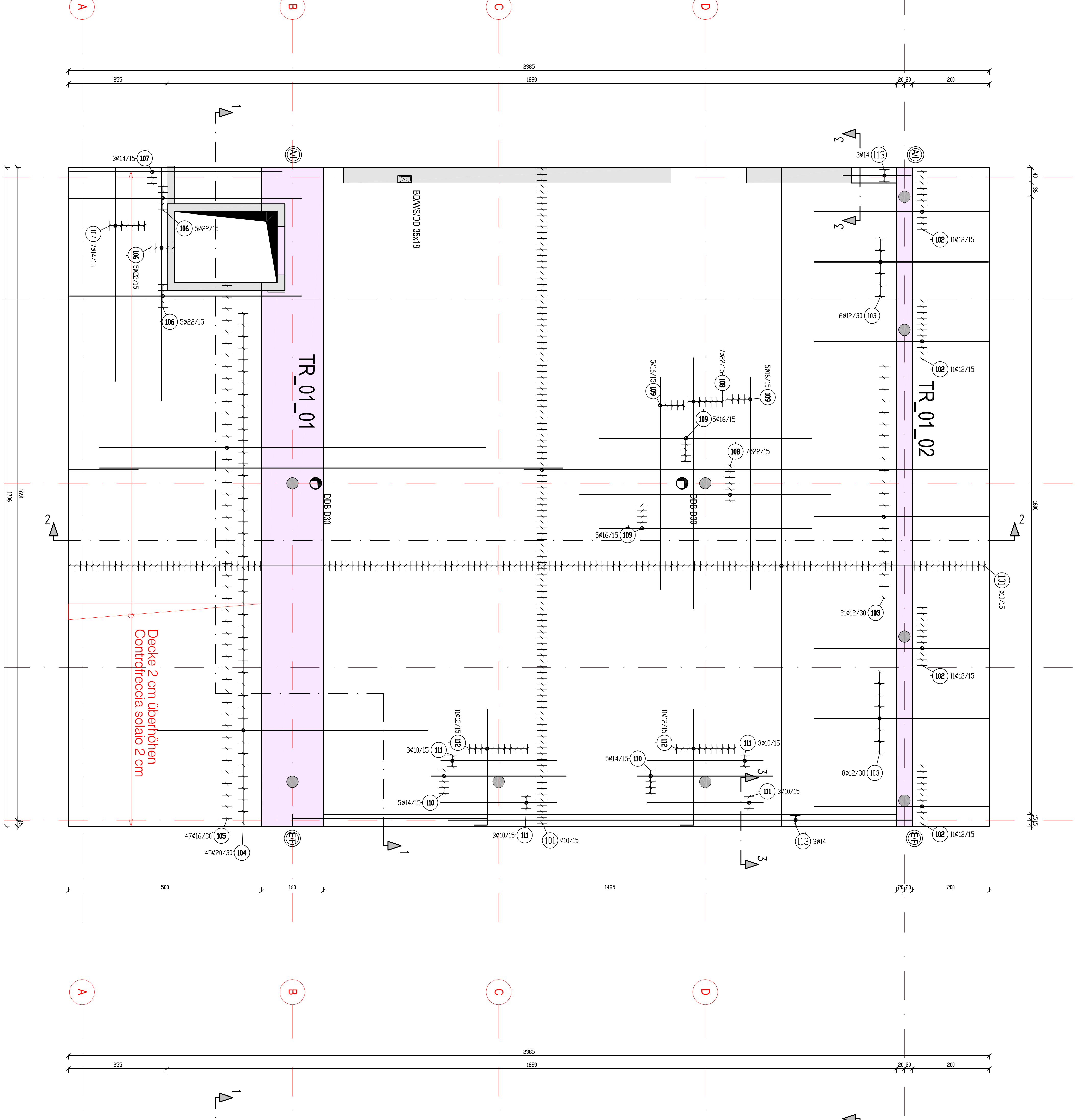
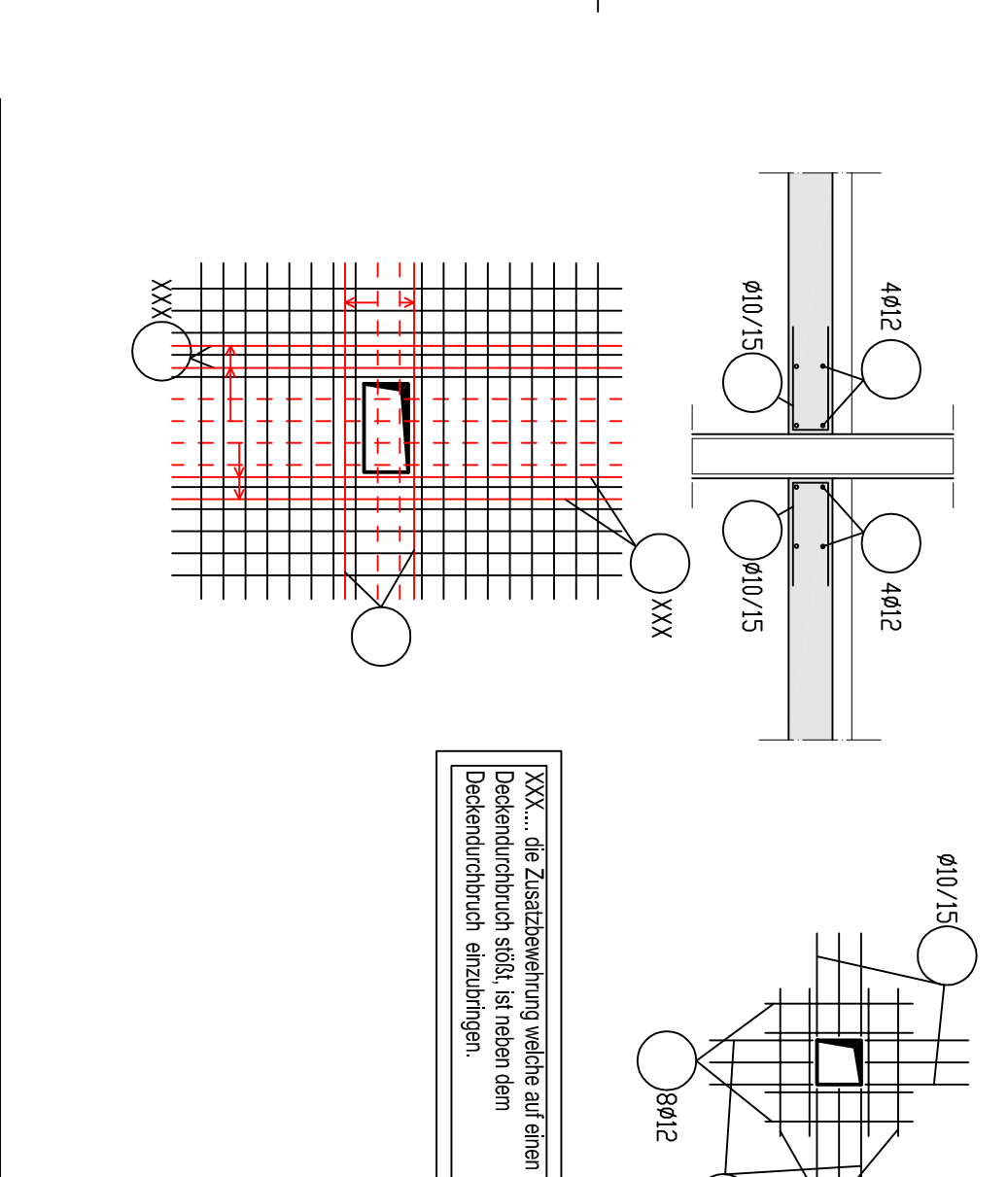
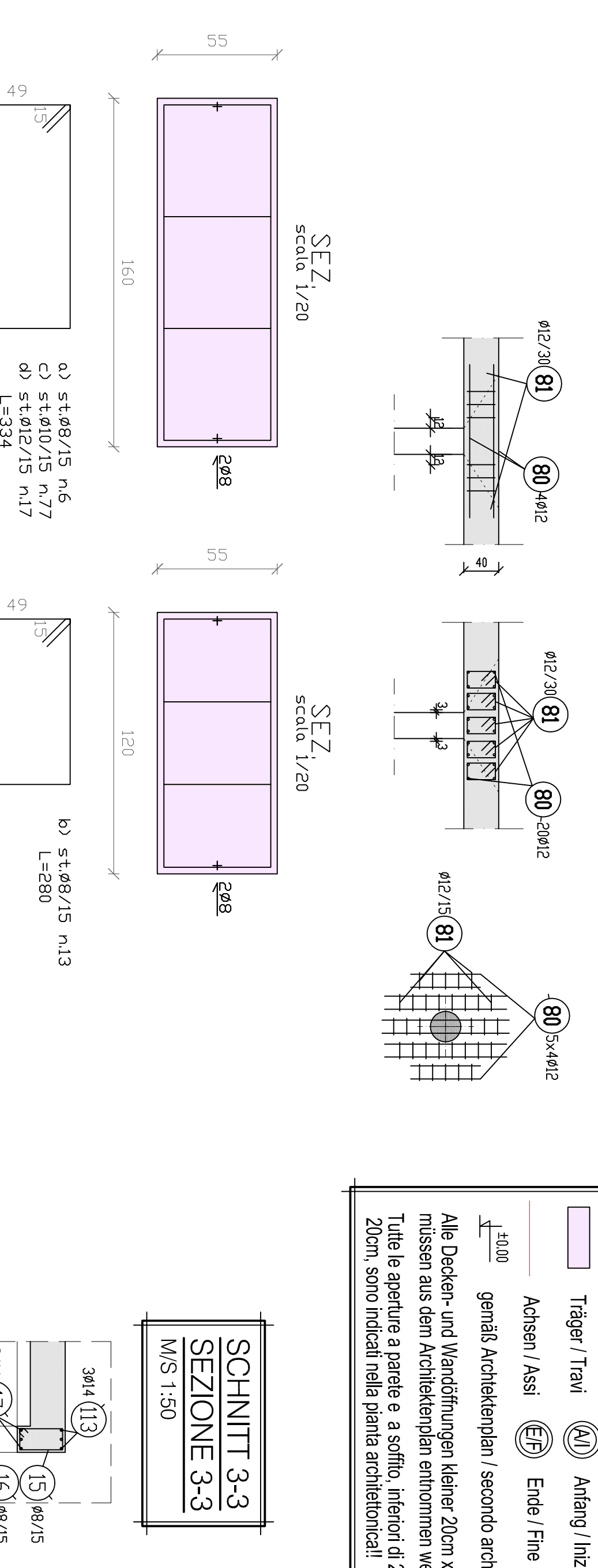
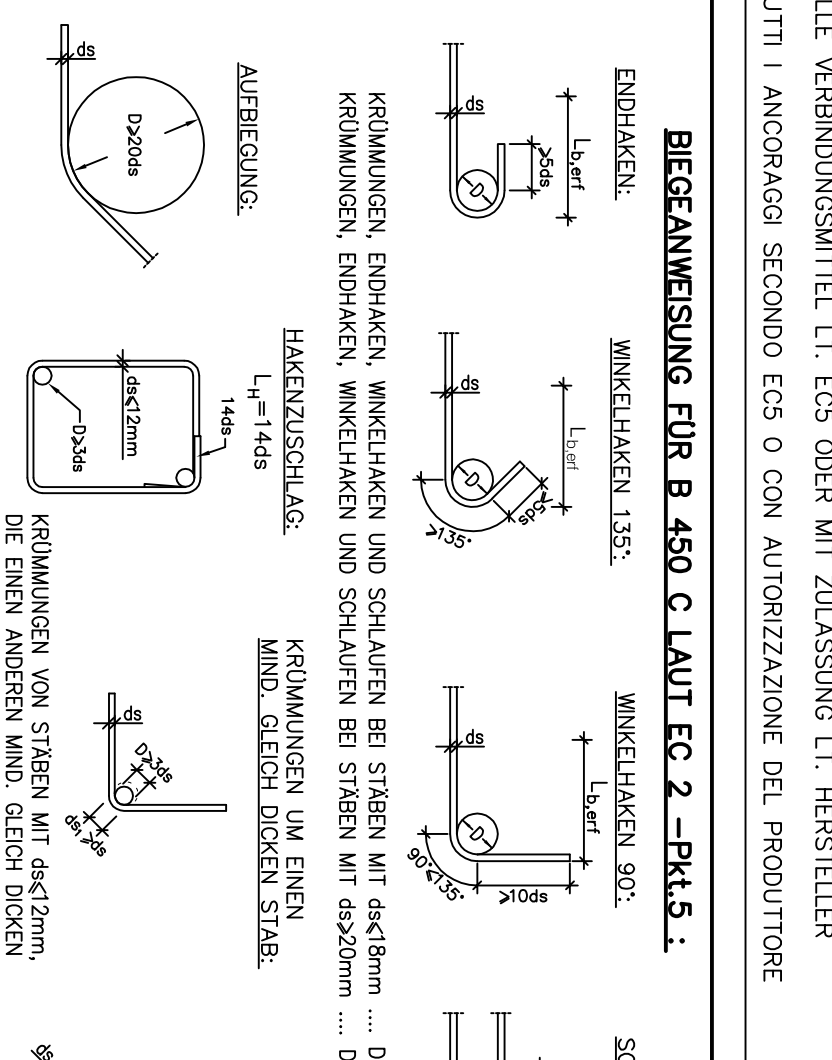
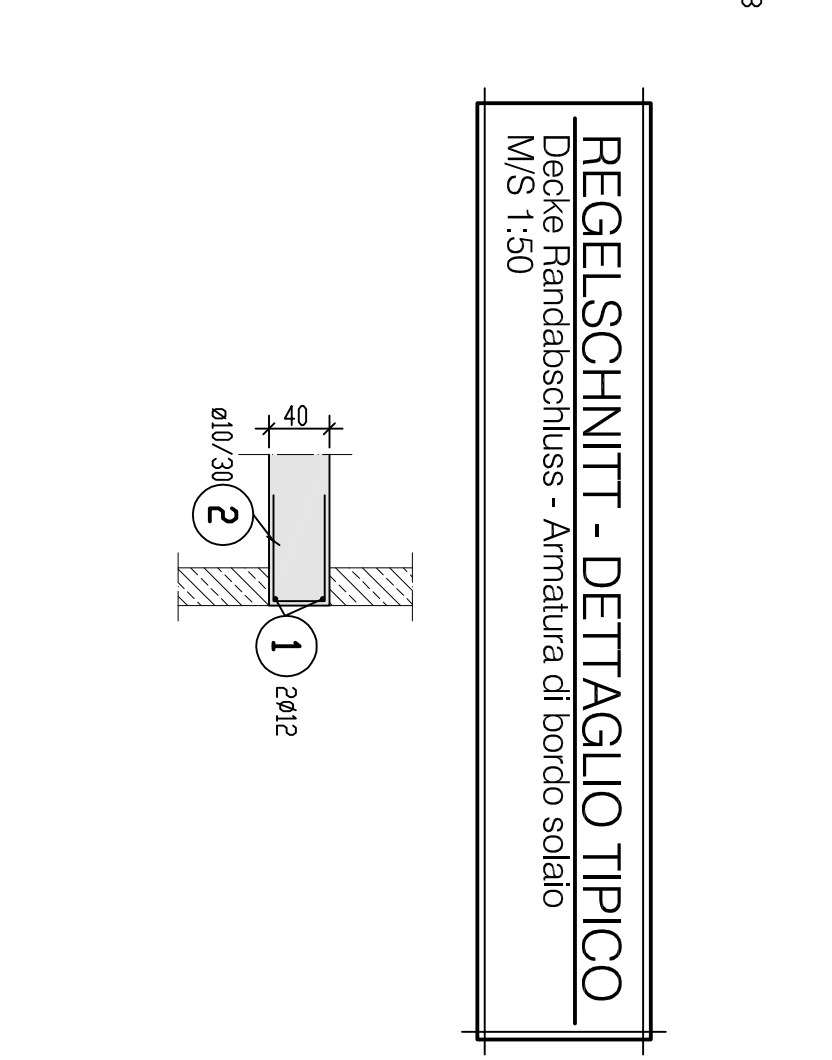
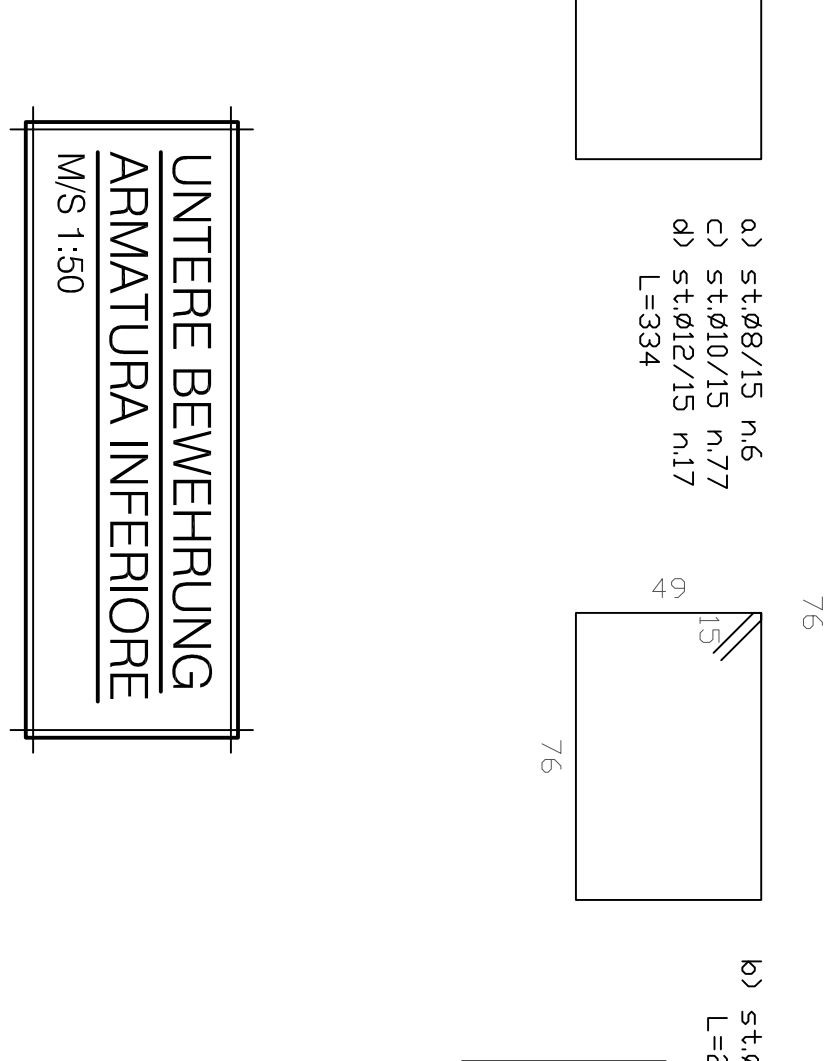
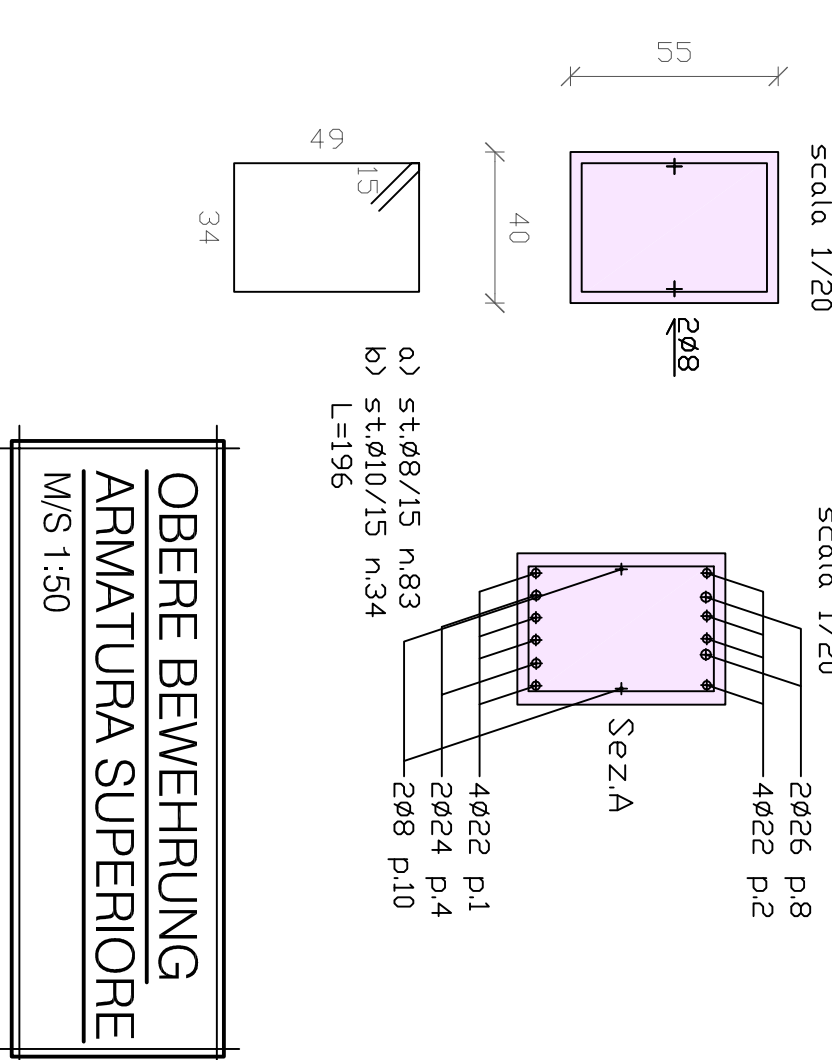
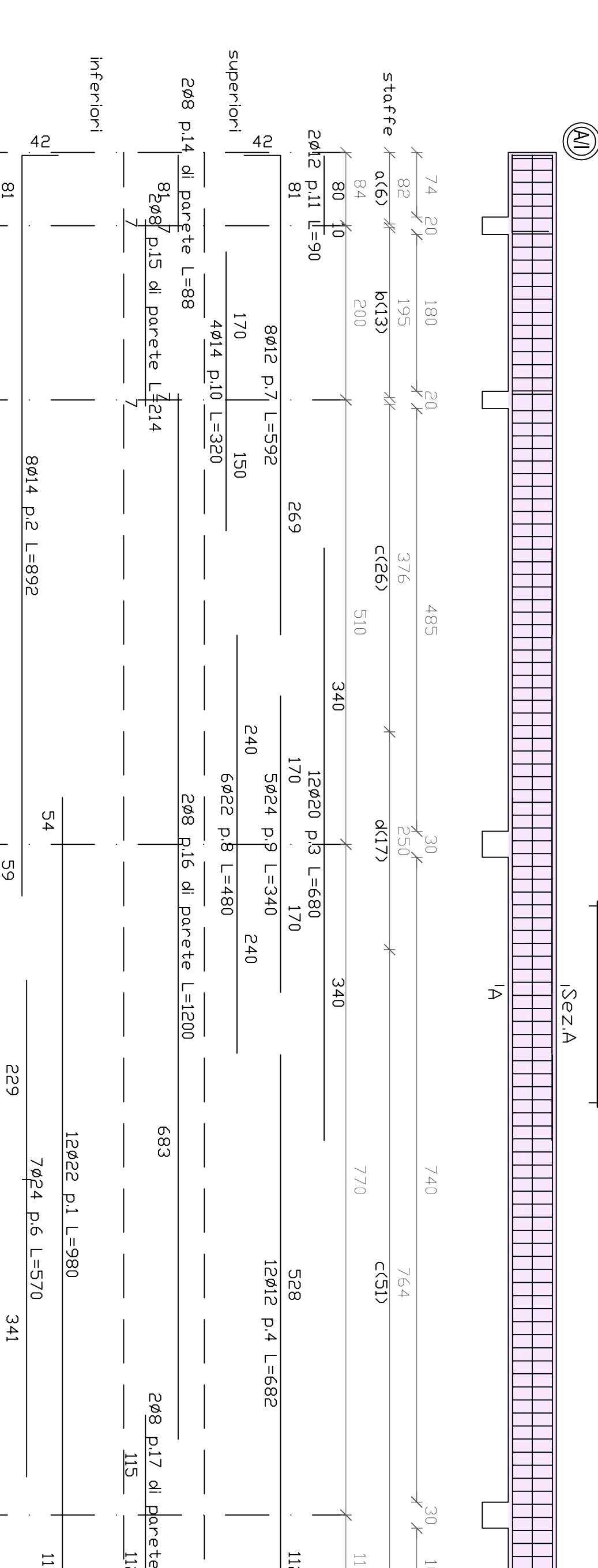
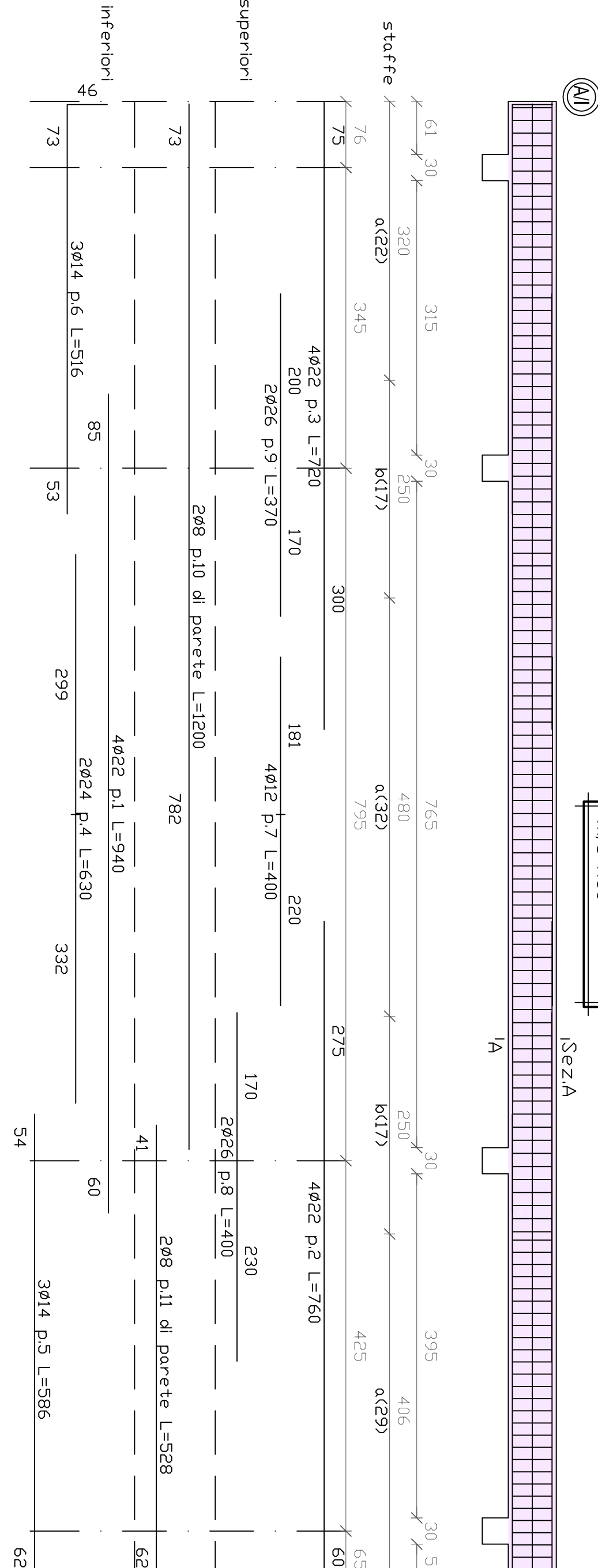
 10h
- (50) 55e1/5 34h
 34h

 10h
- (51) 44 57e2/1
 57h

 10h

[illegible][illegible]

TR. 01. 02		test n.		rege 1	
#	descrip.	perg.	perg.	rege 1	rege 1
001		82	4	940	28.65
1		82	4	940	11.22
2		72	4	760	22.68
3		4	4	720	21.48
4		64	2	630	22.37
5		14	3	590	7.08
6		14	3	510	6.24
7		12	4	420	3.25
8		86	2	460	16.67
9		26	2	370	12.42
10		8	2	120	4.73
11		8	2	308	2.08
0		8	83	196	7.7
6		10	34	196	12.1
		total		352.59	
TR.00.1 + TR.01C				232.24	

[illegible][illegible]